

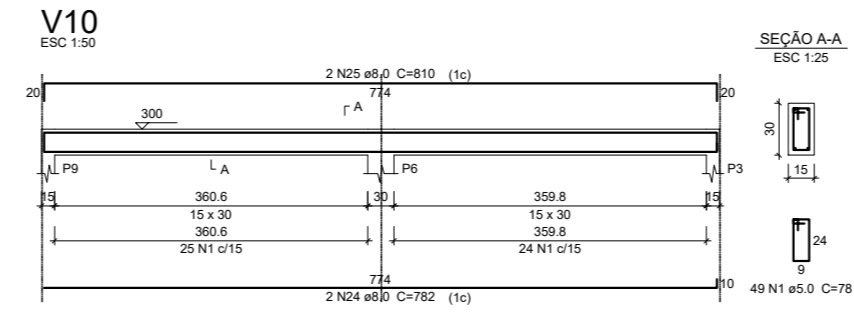
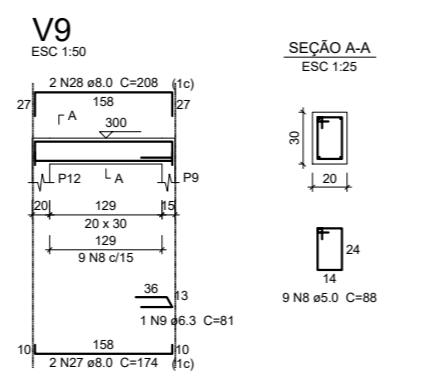
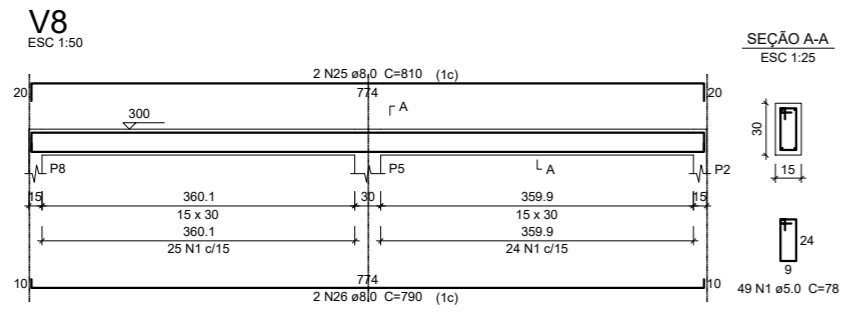
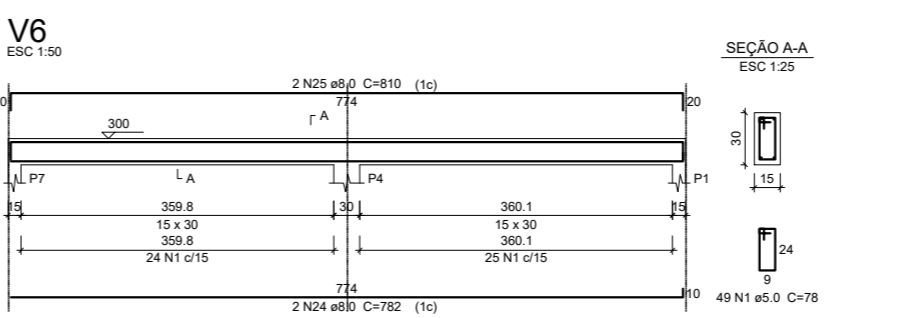
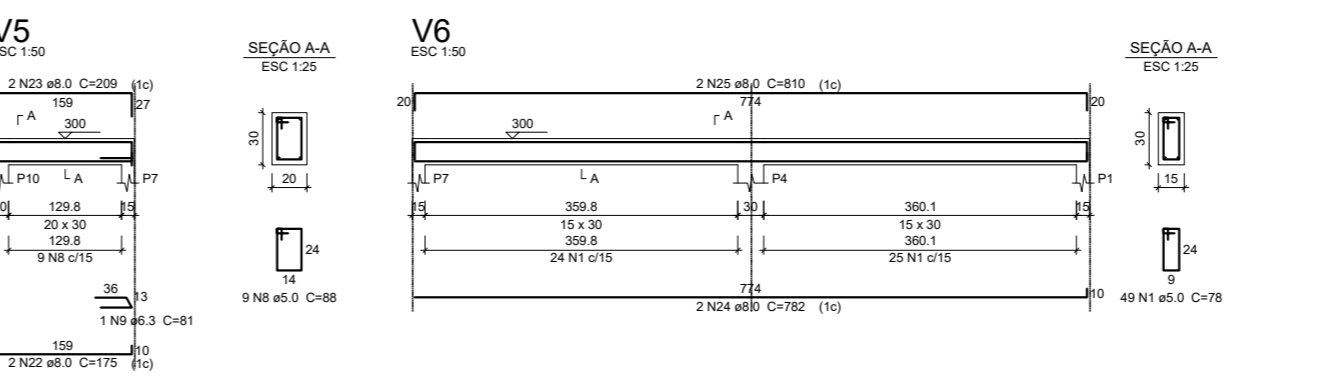
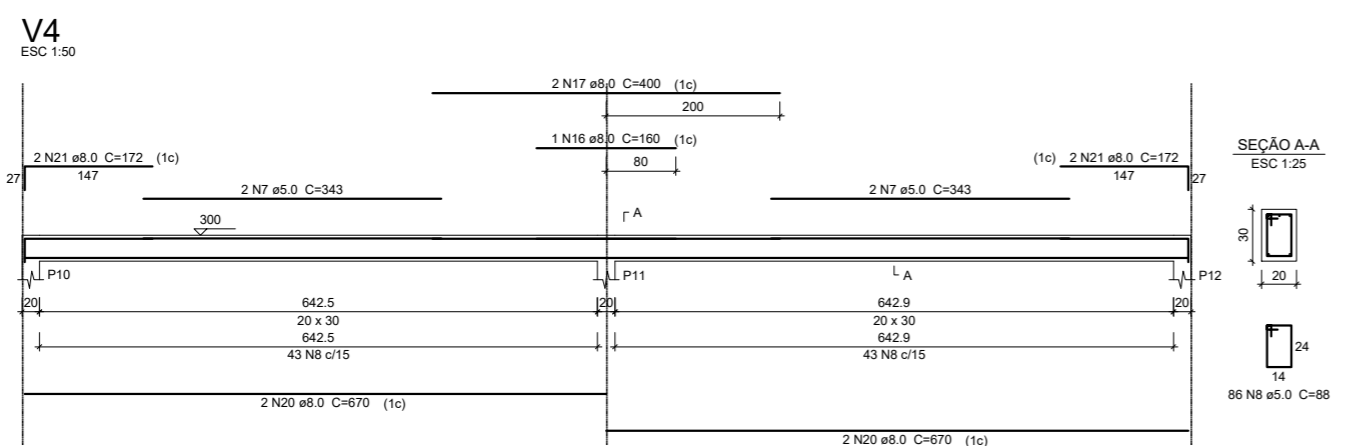
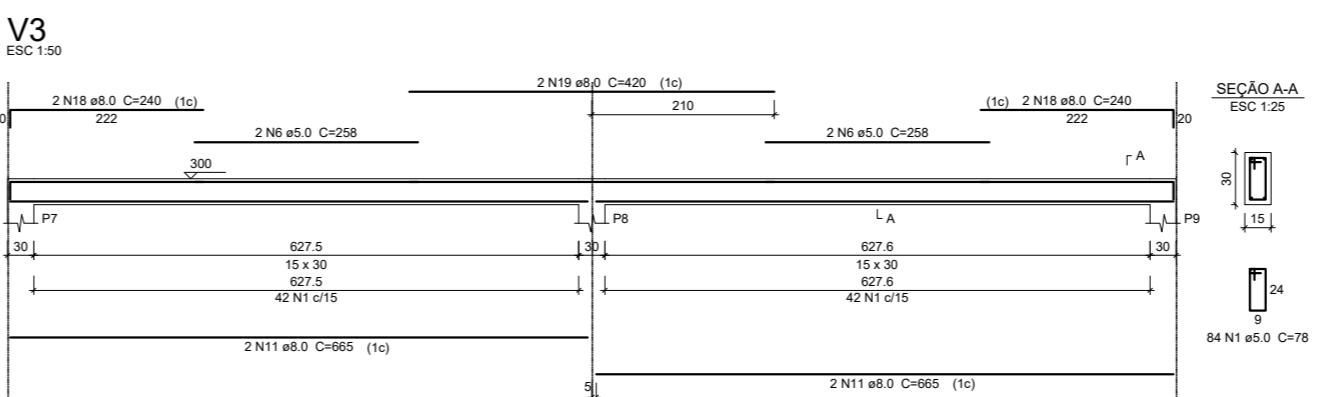
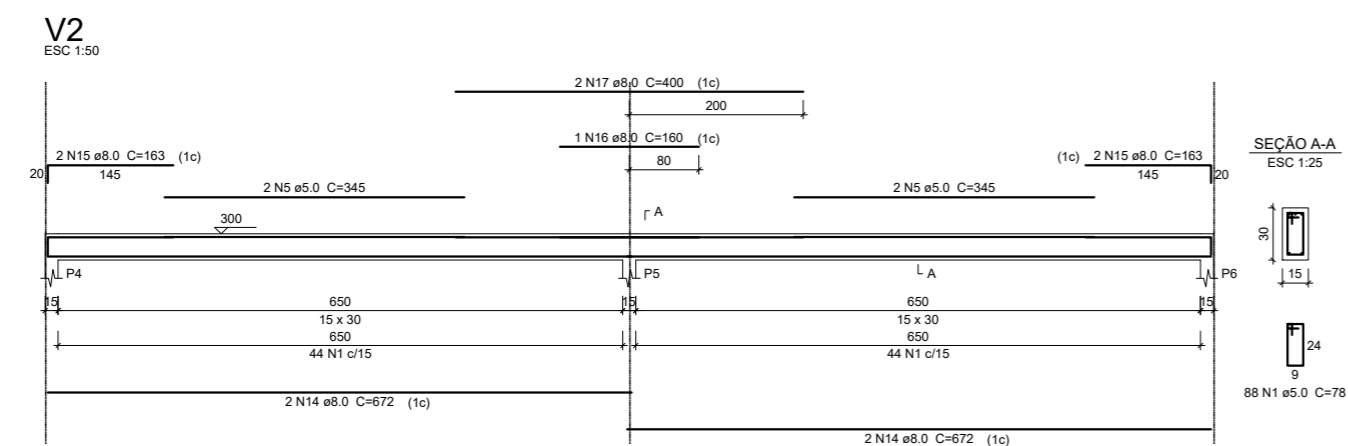
Relação do aço

AÇO	N	DIAM (mm)	QUANT	C.UNIT (cm)	C.TOTAL (cm)
CA60	1	5.0	628	78	48984
	2	5.0	75	68	5100
	3	5.0	2	297	594
	4	5.0	2	298	596
	5	5.0	4	345	1380
	6	5.0	4	256	1032
	7	5.0	4	343	1372
CA50	8	5.0	113	88	9944
	9	6.3	2	81	162
	10	8.0	2	664	1328
	11	8.0	6	665	3990
	12	8.0	4	225	900
	13	8.0	2	380	760
	14	8.0	4	672	2688
	15	8.0	4	163	652
	16	8.0	2	160	320
	17	8.0	4	400	1600
	18	8.0	4	240	960
	19	8.0	2	400	800
	20	8.0	4	670	2680
	21	8.0	4	172	688
	22	8.0	4	175	700
	23	8.0	4	209	836
	24	8.0	4	752	3128
	25	8.0	6	610	4860
	26	8.0	2	790	1580
	27	8.0	2	174	348
	28	8.0	2	208	416
	29	10.0	48	297	14256

Resumo do aço

AÇO	DIAM (mm)	C.TOTAL (m)	PESO + 10 % (kg)
CA50	6.3	1.7	0.4
	8.0	292.8	127.1
	10.0	142.6	96.7
CA60	5.0	690.1	117
PESO TOTAL (kg)			
CA50	224.2		
CA60	117		

Volume de concreto (C-25) = 5,55 m³  
Área de forma = 94,03 m²



Tipo da obra: INSTITUCIONAL		Modalidade:	INFRA-ESTRUTURA
Obra:	SALAS LEITURA/INFORMÁTICA - ESCOLA XV DE OUTUBRO		
	PREFEITURA MUNICIPAL DE CAMPOS DE JÚLIO CGC: 01.614.516/0001-99		
	AVENIDA VOLMIR TABORDA CÂMARA, CENTRO CAMPOS DE JÚLIO-MT CEP: 78307-000		
Autor do Projeto:	Luiz Carlos C. Oliveira Eng. Civil - CREA 1202470122		
Responsável Técnico p/obra:			
PROJETO VIGAS/PILARES COBERTURA			
DESENHO: Luiz Carlos		DATA: 08/10/2021	ESCALA: 1:50